



Engineering - Landscape Architecture - Surveying

7 Waldo Street, St. Augustine, FL 32084 | 904.826.1334 | www.matthews.dccm.com

mdg.cei@dccm.com

LICENSE #26535, LB8590, LA6666877

General Information

Project Name	24016 Middle Village CDD		
Prepared By	Branden J Marcinell		
Date Of Visit	06/09/2025 12:41 PM EDT		
Date Prepared	06/23/2025 EDT		
Weather	Cloudy	Temp	91
Site Conditions		Date of Last Report	N/A
Present at Site			

Site Notes

N/A

Corrected since last report

N/A

Observations

Drainage

1

1

Control structure functioning as designed.

5

5

Control structure functioning as designed.

8

11

Weir is functioning as designed.

9

12

Control structure operating as designed.

10

13

Control structure in retention area, system is charged.

Observations**Erosion****47****113**

Erosion underneath sidewalk. Backfill to protect against settling and separation or monitor for worsening condition.

Hardscape**34****100**

Wooden support post in early stages of rot. Observe at future inspections for stability.

39**105**

Brick pavers minor settling around grate. Monitor in future inspections.

Irrigation**36****102**

Erosion around irrigation. Adjust head to correct.

Misc**18****49**

Rust on picnic table, paint delaminating. observe for worsening condition.

Storm**1****1**

Control structure functioning as designed.

8**11**

Weir is functioning as designed.

9**12**

Control structure operating as designed.

10**13**

Control structure in retention area, system is charged.

22**88**

Control structure MES in pond cracking surface concrete. Observed at future inspections.

Needs Action**Drainage**

- 2** **2** Weir blocked by vegetation and not functioning correctly. Remove vegetation and clean weir great as needed.
- 3** **3** Control structure operating as designed. Advise removing debris to make sure it does not clog during operation at high volume.
- 6** **6** Control structure operating as designed. Some debris has gathered in the skimmer. Suggest cleaning regiment regularly to avoid clogging.
- 7** **7** Soil/Vegetation on downstream side of weir needs to be cleared. Clean organics and debris from skimmer.

Erosion

- 4** **4** Control structure operating as per design. Debris buildup on downstream side of weir. Erosion in pond bank present near control structure. Needs to be addressed.
- 31** **97** Large grade change at pond Bank. Multiple locations of erosion at property lines. Needs to be addressed due to the level of erosion observed.
- 41** **107** Concrete pad being undermine suggest fill and stabilize around corner to protect against cracking and erosion.

Hardscape

- 11** **15** Raised edge on sidewalk, trip hazard.
- 12** **16** Corrective action in progress
- 13** **27** Raised sidewalk edge from tree rooting, trip hazard.
- 19** **55** CDD will contact Clay County for corrective action. Clay County has instructed CDD to report sidewalk issues within ROW per JS-facilities manager.
- 33** **99** Landing pad flexes at right corner before stairs. Advise adding corner support to keep from flexing and potential premature ware of stair pads.
- 38** **104** Soft spot in clay surface. Repair / investigate cause.

Needs Action**Irrigation**

25 **91** Possible issue with irrigation. Investigate as needed.

35 **101** Erosion around irrigation. Adjust head to correct.

Misc

14 **40** Corrective action is in progress

15 **41** Bike rack loose. Post hole depressions in concrete, trip hazard.

16 **42** Fence and backstop fence damaged, broken bench.

17 **45** Water fountains damaged, inoperable.

42 **108** Fence support down and broken. Repair and reattach for stability.

Roadway

40 **106** Pot hole next to inlet and parking lot. Possible issue with pipe underground. Patch hole with pavement or investigate cause for complete repair.

Safety

20 **71** Railing loose. Suggest repair to resecure.

21 **87** Retaining wall separating from walkway. Advised inspection for safety.

24 **90** Expose rusted metal on landing. Landing flexes under adult load. Protect against sharp edges.

28 **94** Broken concrete creating a trip hazard. Replaced sidewalk segment to repair damaged area flush to existing concrete.

29 **95** Support post for pavilion area rotting out at the base. Advised inspection by structural engineer.

Needs Action

30 **96** Exposed rusted metal on landing. Landing flexes under adult load. Multiple areas showing exposed rust and sharp edges. Advise protection against sharp edges.

32 **98** Abrupt grade change in sidewalk due to shaving. Advised painting, yellow, or softening grade change.

43 **109** Broken sidewalk with trip hazard. Repair flush with existing sidewalk.

44 **110** Broken sidewalk with trip hazard. Repair flush with existing sidewalk.

45 **111** Broken sidewalk with trip hazard. Repair flush with existing sidewalk.

46 **112** Broken sidewalk with trip hazard. Repair flush with existing sidewalk.

Storm

2 **2** Weir blocked by vegetation and not functioning correctly. Remove vegetation and clean weir grate as needed.

3 **3** Control structure operating as designed. Advise removing debris to make sure it does not clog during operation at high volume.

6 **6** Control structure operating as designed. Some debris has gathered in the skimmer. Suggest cleaning regiment regularly to avoid clogging.

7 **7** Soil/Vegetation on downstream side of weir needs to be cleared. Clean organics and debris from skimmer.

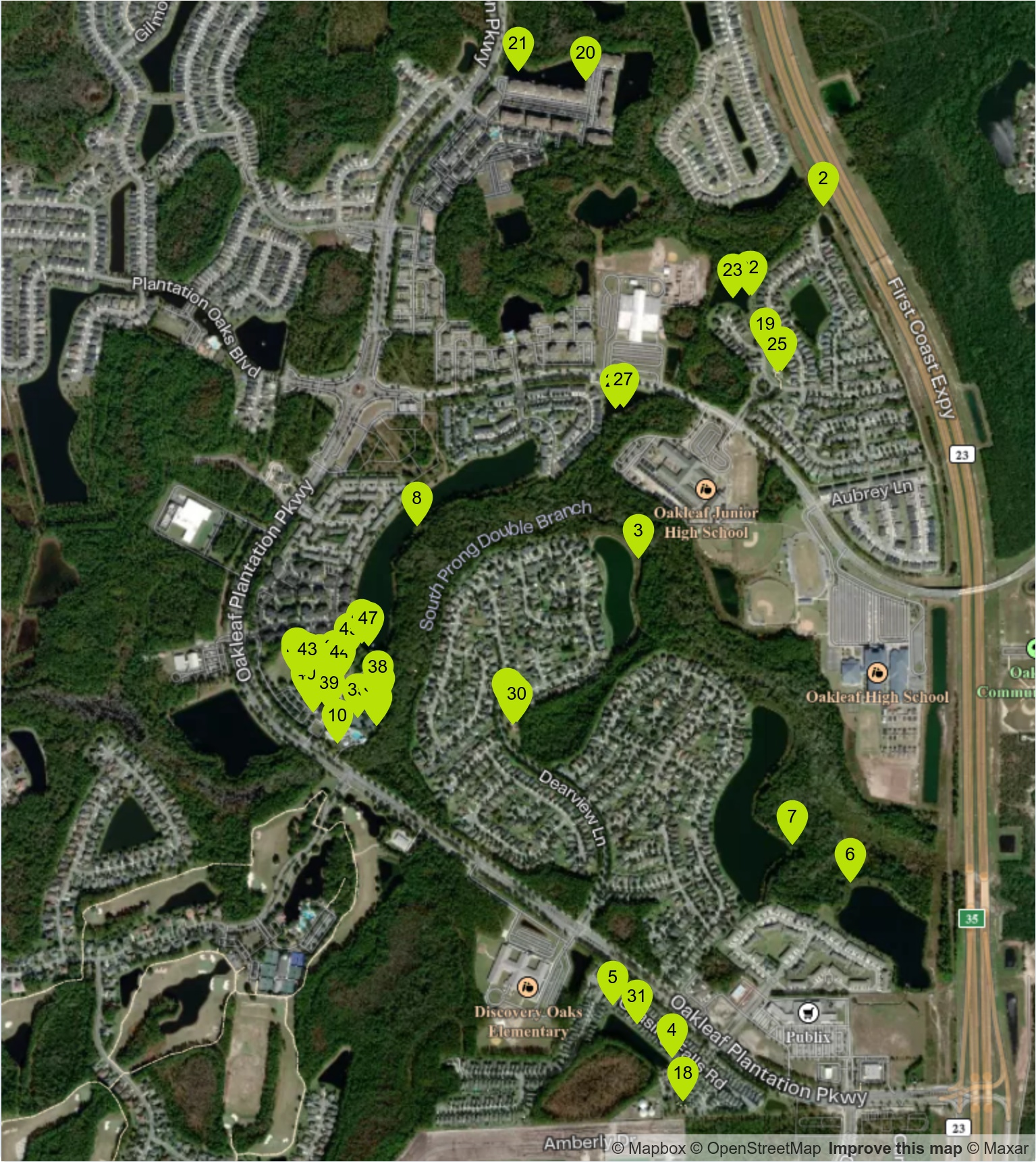
23 **89** Dead vegetation on Pond Bank. Reestablish vegetation to stabilize and protect against erosion.

26 **92** Weir blocked by vegetation and not functioning correctly. Remove vegetation and clean weir grate as needed.

27 **93** Dead vegetation on Pond Bank. Reestablish vegetation to stabilize and protect against erosion.

37 **103** Trench drain along court's edge clogged. Advise cleaning to improve drainage.

Map Overview



Map Overview



Action Items

1

1

Observation

Pin Type: General

Categories:

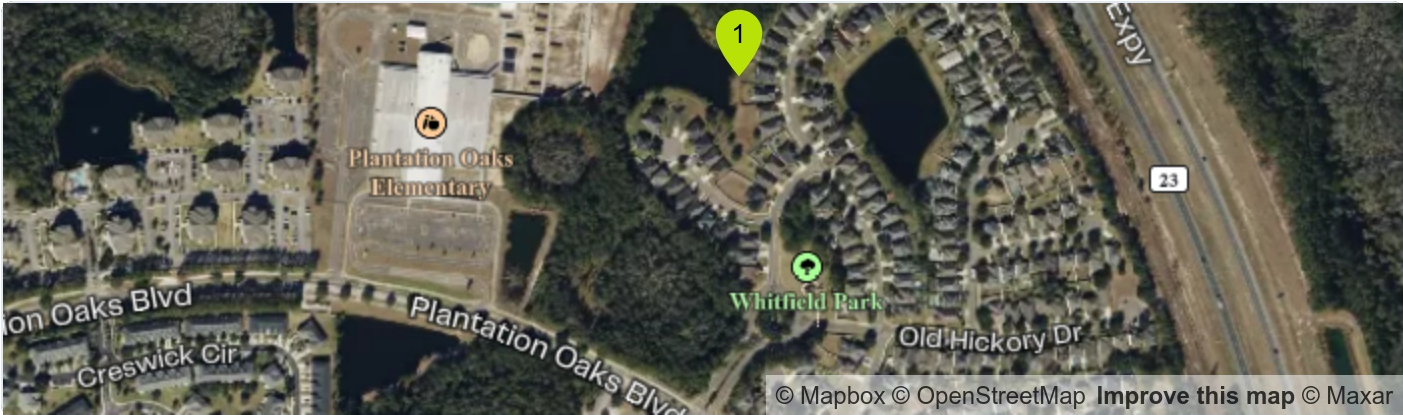
- Drainage
- Storm

Location:

Created by:

Branden J Marcinell

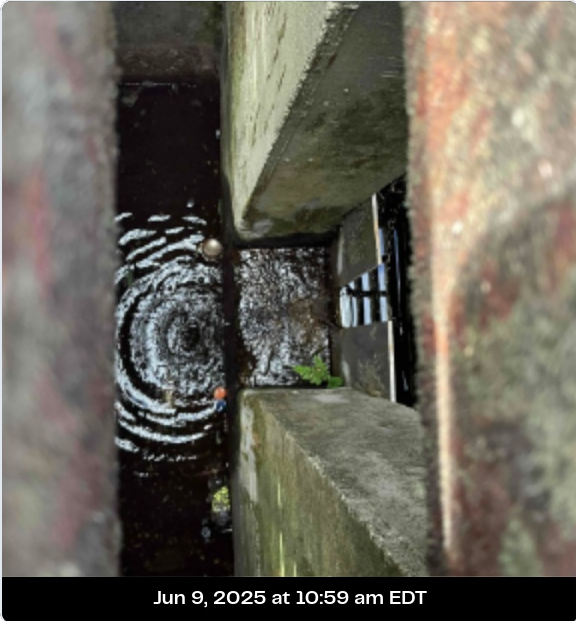
Jun 9, 2025 at 10:59 am EDT



Notes:

Branden J Marcinell June 9, 2025 10:59 AM EDT
Control structure functioning as designed.

Photos:



2

2

Needs Action

Pin Type: General

Categories:

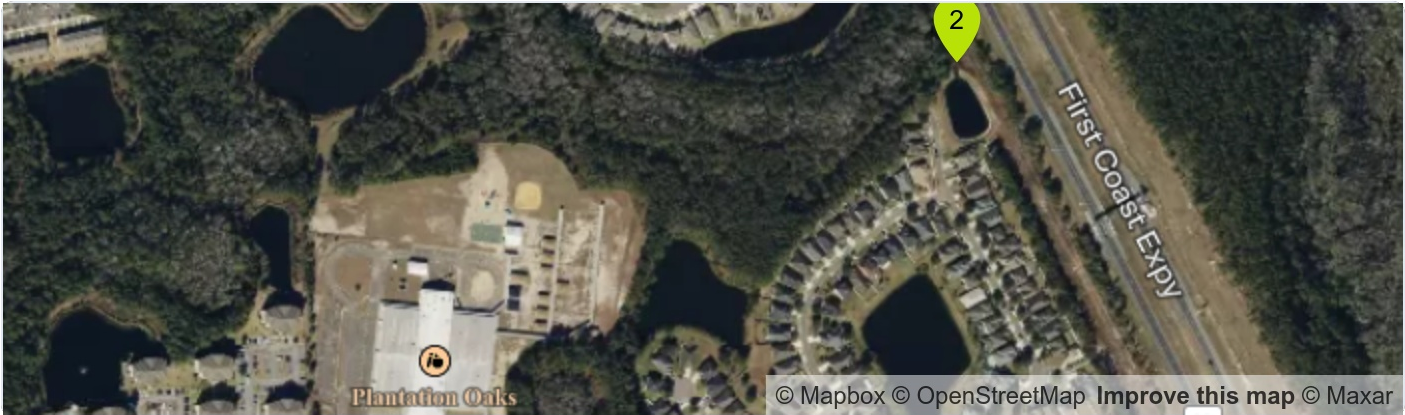
- Drainage
- Storm

Location:

Created by:

Branden J Marcinell

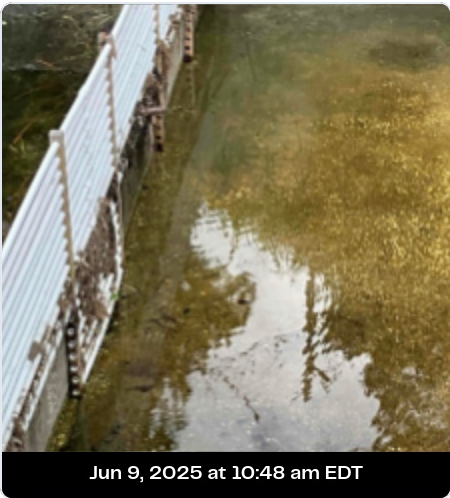
Jun 9, 2025 at 10:48 am EDT



Notes:

Branden J Marcinell June 9, 2025 10:48 AM EDT
Weir blocked by vegetation and not functioning correctly. Remove vegetation and clean weir great as needed.

Photos:



3

3

Needs Action

Pin Type: General

Categories:

- Drainage
- Storm

Location:

Created by:

Branden J Marcinell

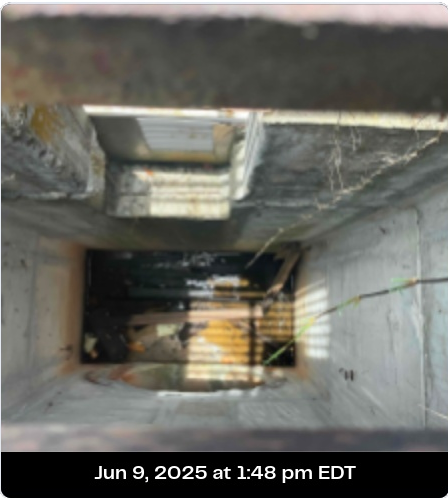
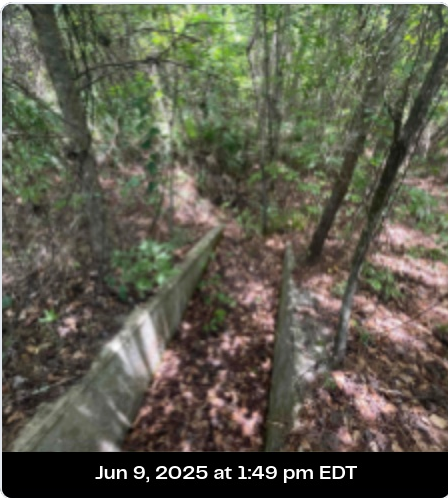
Jun 9, 2025 at 1:50 pm EDT



Notes:

Branden J Marcinell June 9, 2025 1:50 PM EDT
Control structure operating as designed. Advise removing debris to make sure it does not clog during operation at high volume.

Photos:



3

3

Needs Action(continued)

Created by:



Branden J Marcinell

Jun 9, 2025 at 1:50 pm EDT

Pin Type: General

Photos:



Jun 9, 2025 at 1:48 pm EDT



Jun 9, 2025 at 1:47 pm EDT

4

4

Needs Action

Pin Type: General

Categories:

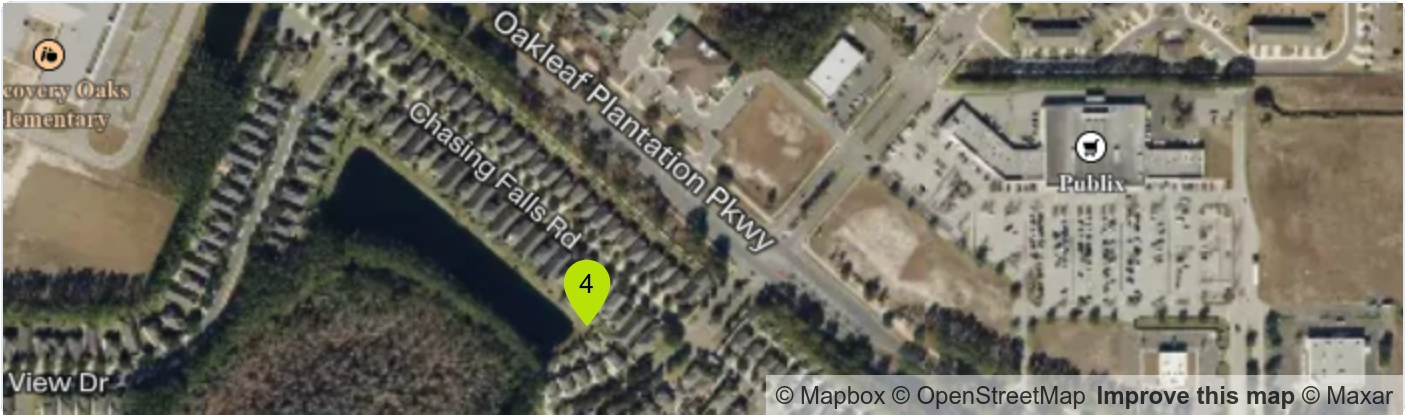
Erosion

Location:

Created by:

Branden J Marcinell

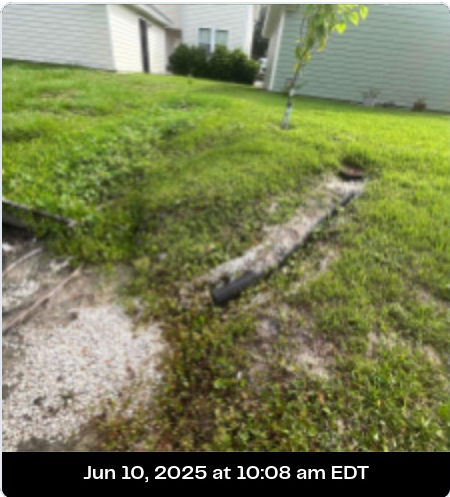
Jun 10, 2025 at 10:09 am EDT



Notes:

Branden J Marcinell June 10, 2025 10:09 AM EDT
Control structure operating as per design. Debris buildup on downstream side of weir. Erosion in pond bank present near control structure. Needs to be addressed.

Photos:



4

4

Needs Action *(continued)*

Created by:



Branden J Marcinell

Jun 10, 2025 at 10:09 am EDT

Pin Type: General

Photos:



Jun 10, 2025 at 10:07 am EDT

5

5

Observation

Pin Type: General

Categories:

Drainage

Location:

Created by:



Branden J Marcinell

Jun 10, 2025 at 10:03 am EDT



Notes:

Branden J Marcinell June 10, 2025 10:03 AM EDT
Control structure functioning as designed.

Photos:



Jun 10, 2025 at 10:02 am EDT



Jun 10, 2025 at 10:01 am EDT




Jun 10, 2025 at 10:01 am EDT

5

5

Observation(continued)

Created by:
 Branden J Marcinell
Jun 10, 2025 at 10:03 am EDT

Pin Type: General

Photos:



6

6

Needs Action

Pin Type: General

Categories:

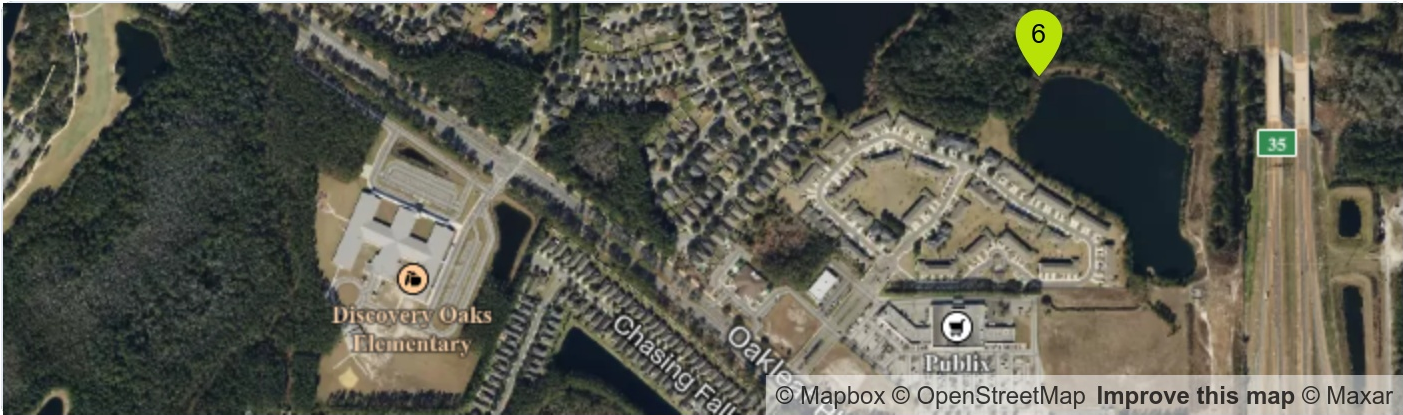
- Drainage
- Storm

Location:

Created by:

Branden J Marcinell

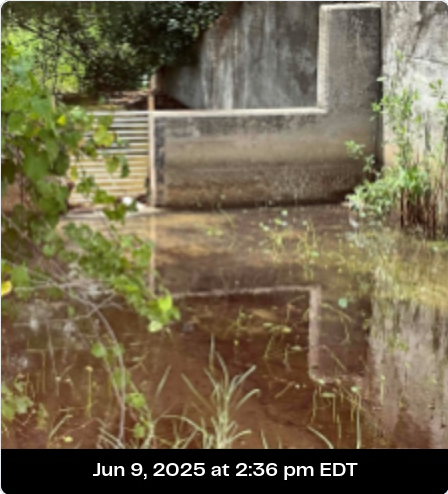
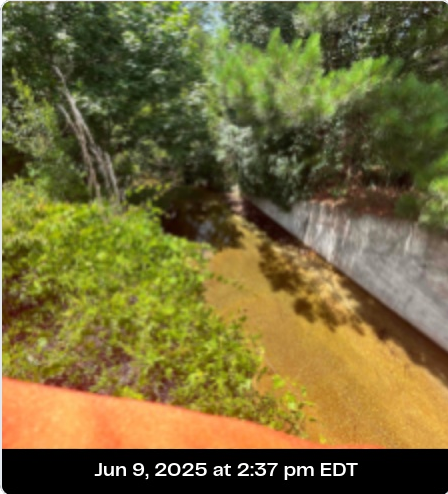
Jun 9, 2025 at 2:38 pm EDT



Notes:

Branden J Marcinell June 9, 2025 2:38 PM EDT
Control structure operating as designed. Some debris has gathered in the skimmer. Suggest cleaning regiment regularly to avoid clogging.

Photos:



7

7

Needs Action

Pin Type: General

Categories:

Drainage

Storm

Location:

Created by:

Branden J Marcinell

Jun 9, 2025 at 2:50 pm EDT



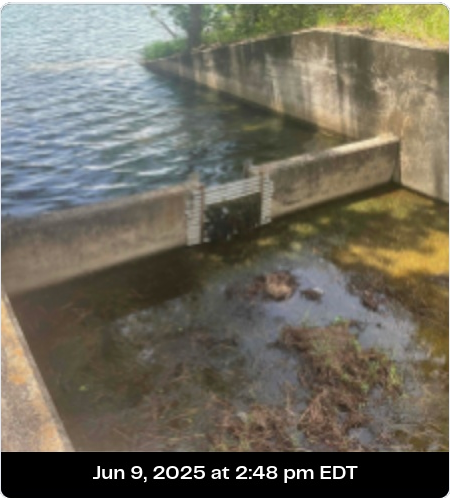
Notes:

Branden J Marcinell

June 9, 2025 2:50 PM EDT

Soil/Vegetation on downstream side of weir needs to be cleared. Clean organics and debris from skimmer.

Photos:



8

11

Observation

Pin Type: General


Categories:

Drainage

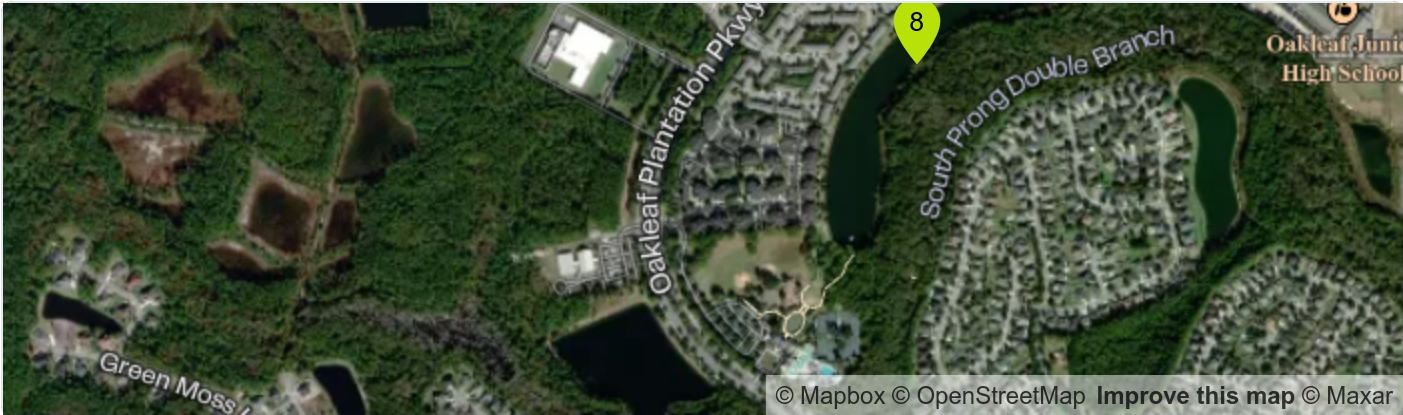
Storm

Location:

Created by:

 Branden J Marcinell

Jun 9, 2025 at 12:51 pm EDT



Notes:

Branden J Marcinell June 9, 2025 12:51 PM EDT
Weir is functioning as designed.

Photos:





12

Observation

Created by:



Branden J Marcinell

Jun 9, 2025 at 1:13 pm EDT

Pin Type: General

Categories:

Drainage

Storm

Location:



© Mapbox © OpenStreetMap Improve this map © Maxar

Notes:

Branden J Marcinell June 9, 2025 1:13 PM EDT
Control structure operating as designed.

Photos:



Jun 9, 2025 at 1:12 pm EDT



Jun 9, 2025 at 1:12 pm EDT



Jun 9, 2025 at 1:11 pm EDT

10

13

Observation

Pin Type: General

Categories:

Drainage

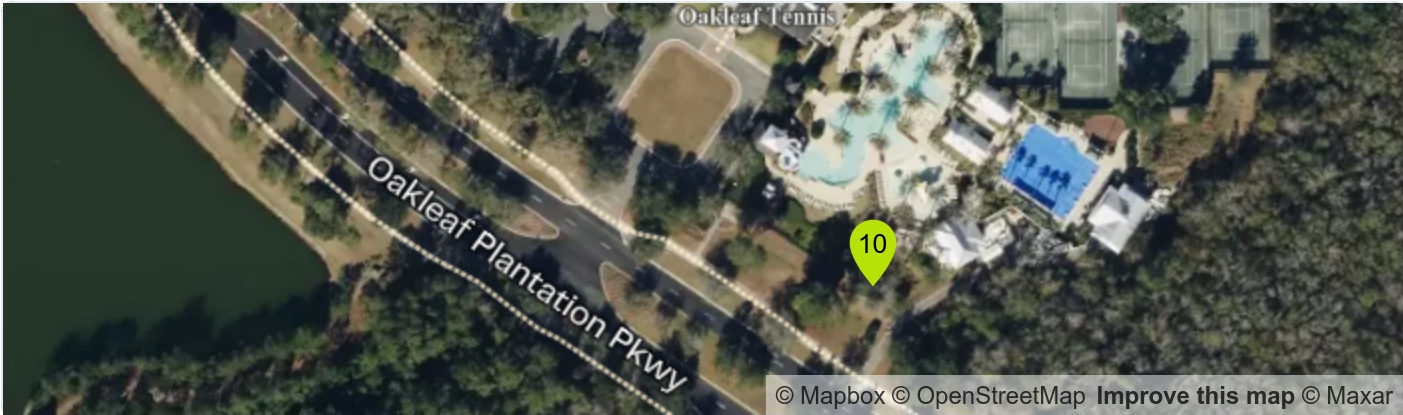
Storm

Location:

Created by:

Branden J Marcinell

Jun 9, 2025 at 1:21 pm EDT



Notes:

Branden J Marcinell June 9, 2025 1:21 PM EDT
Control structure in retention area, system is charged.

Photos:



11

15

Needs Action

Pin Type: General

Categories:

Hardscape

Location:

Created by:



Ryan Morgan
CEI Field Technician

Sep 25, 2024 at 12:13 pm EDT



Notes:

Ryan Morgan

September 25, 2024 12:13 PM EDT

Raised edge on sidewalk, trip hazard.

Photos:



12

16

Needs Action

Pin Type: General

Categories:

Hardscape

Location:

Created by:

Mike Silverstein
Senior Construction Inspector

May 2, 2025 at 1:05 pm EDT



Notes:

Mike Silverstein

May 2, 2025 1:05 PM EDT

Corrective action in progress

Photos:



13

27

Needs Action

Pin Type: General

Categories:

Hardscape

Location:

Created by:



Ryan Morgan

CEI Field Technician

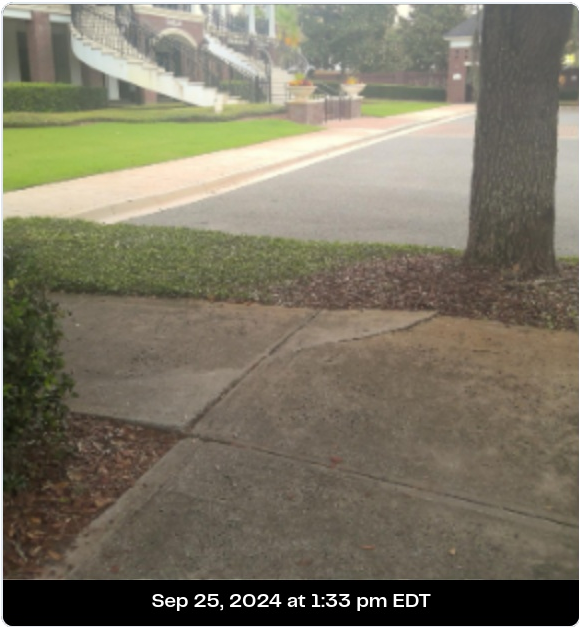
Sep 25, 2024 at 1:33 pm EDT



Notes:

Ryan Morgan September 25, 2024 1:33 PM EDT
Raised sidewalk edge from tree rooting, trip hazard.

Photos:



14

40

Needs Action


Pin Type: General

Categories:

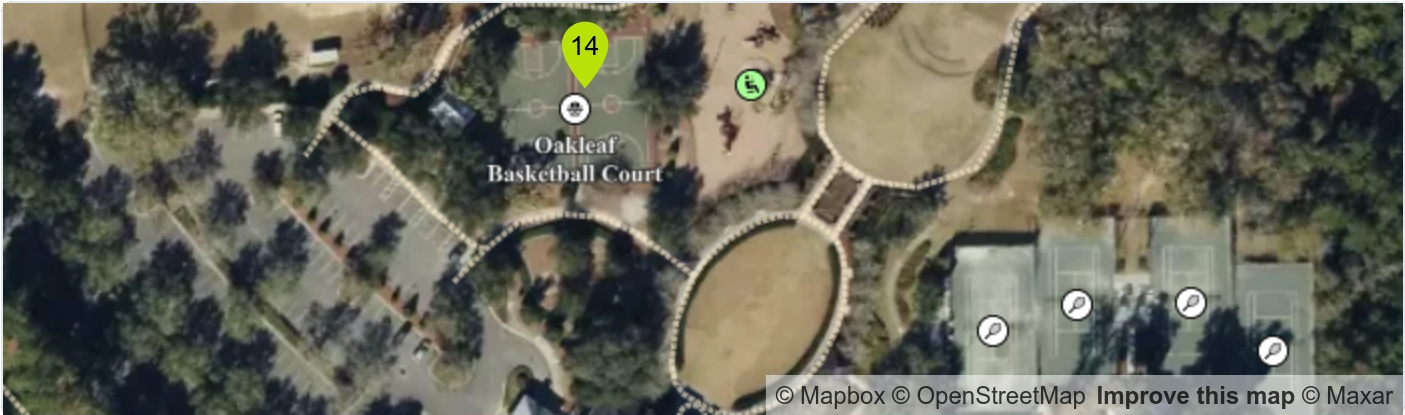
Misc

Location:

Created by:

 Mike Silverstein
Senior Construction Inspector

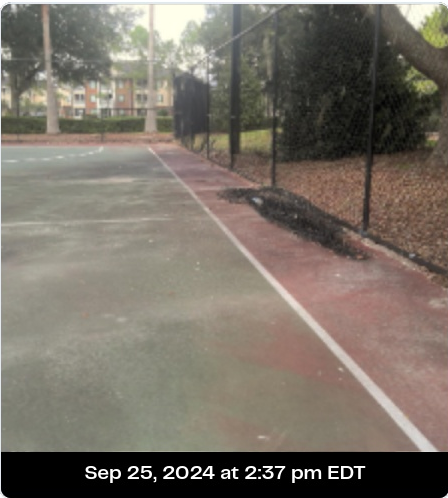
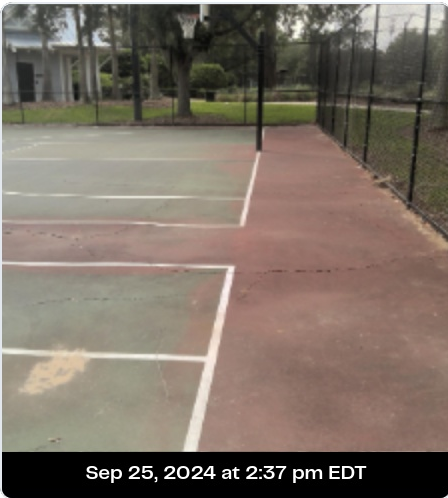
May 2, 2025 at 1:05 pm EDT



Notes:

Mike Silverstein May 2, 2025 1:05 PM EDT
Corrective action is in progress

Photos:



14

40

Needs Action*(continued)*

Created by:



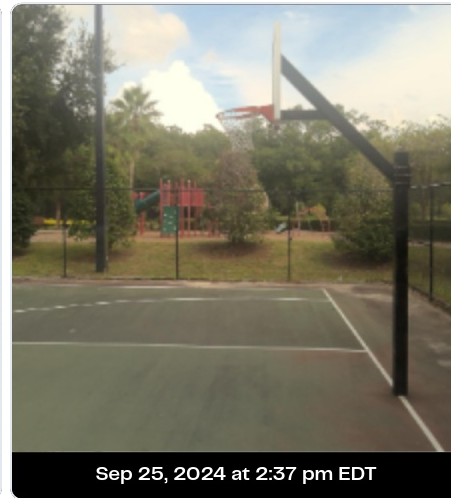
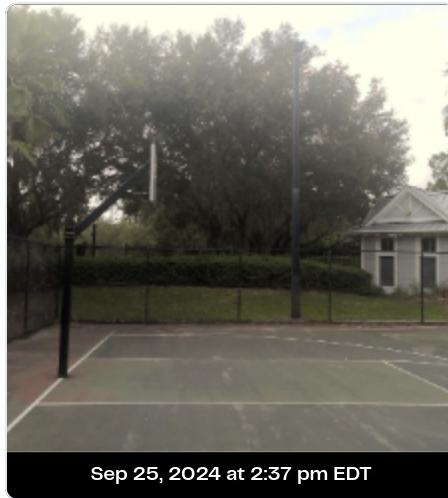
Mike Silverstein

Senior Construction Inspector

May 2, 2025 at 1:05 pm EDT

Pin Type: General

Photos:



15

41

Needs Action

Pin Type: General

Categories:

Misc

Location:

Created by:

 Ryan Morgan
CEI Field Technician

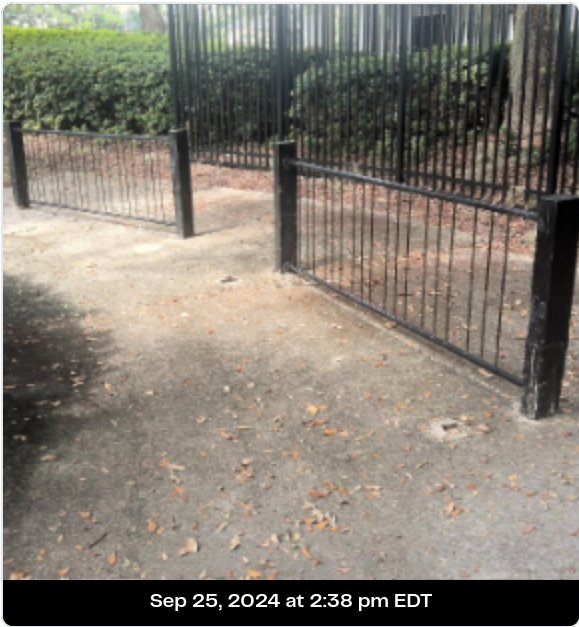
Sep 25, 2024 at 2:38 pm EDT



Notes:

Ryan Morgan September 25, 2024 2:38 PM EDT
Bike rack loose. Post hole depressions in concrete, trip hazard.

Photos:



16

42

Needs Action

Pin Type: General

Categories:

Misc

Location:

Created by:

 Ryan Morgan
CEI Field Technician

Sep 25, 2024 at 2:53 pm EDT



Notes:

Ryan Morgan September 25, 2024 2:53 PM EDT
Fence and backstop fence damaged, broken bench.

Photos:



16

42

Needs Action(continued)

Created by:

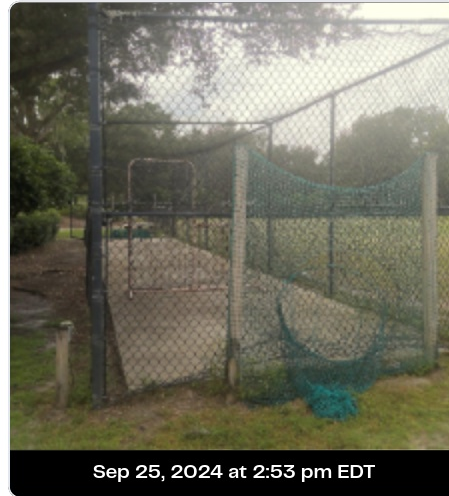


Ryan Morgan
CEI Field Technician

Sep 25, 2024 at 2:53 pm EDT

Pin Type: General

Photos:



17

45

Needs Action

Pin Type: General

Categories:

Misc

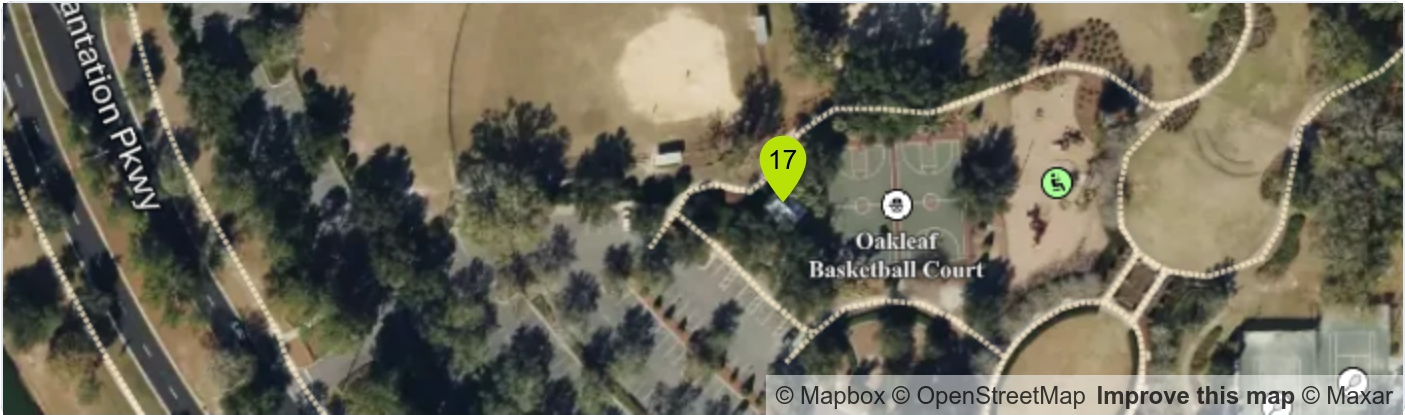
Location:

Created by:



Ryan Morgan
CEI Field Technician

Sep 26, 2024 at 10:44 am EDT



Notes:

Ryan Morgan September 26, 2024 10:44 AM EDT

Water fountains damaged, inoperable.

Photos:




18

49

Observation

Created by:

 Branden J Marcinell

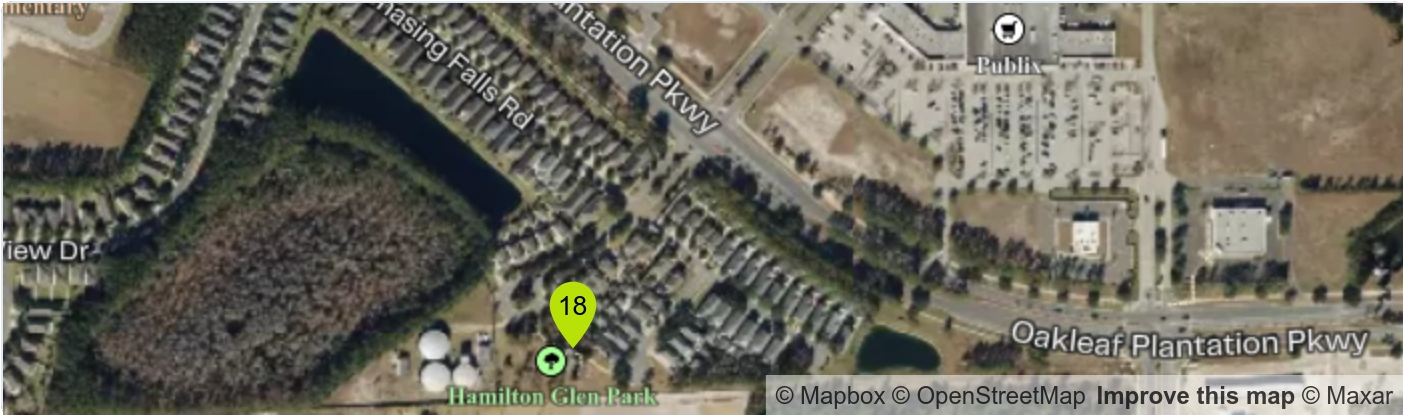
Jun 10, 2025 at 10:41 am EDT

Pin Type: General

Categories:

Misc

Location:



Notes:

Branden J Marcinell June 10, 2025 10:41 AM EDT
Rust on picnic table, paint delaminating. observe for worsening condition.

Photos:



19

55

Needs Action


Pin Type: General

Categories:

Hardscape

Location:

Created by:

 Mike Silverstein
Senior Construction Inspector

May 2, 2025 at 8:56 am EDT



Notes:

Mike Silverstein May 2, 2025 8:56 AM EDT

CDD will contact Clay County for corrective action. Clay County has instructed CDD to report sidewalk issues within ROW per JS-facilities manager.

Photos:



20

71

Needs Action


Pin Type: General

Categories:

Safety

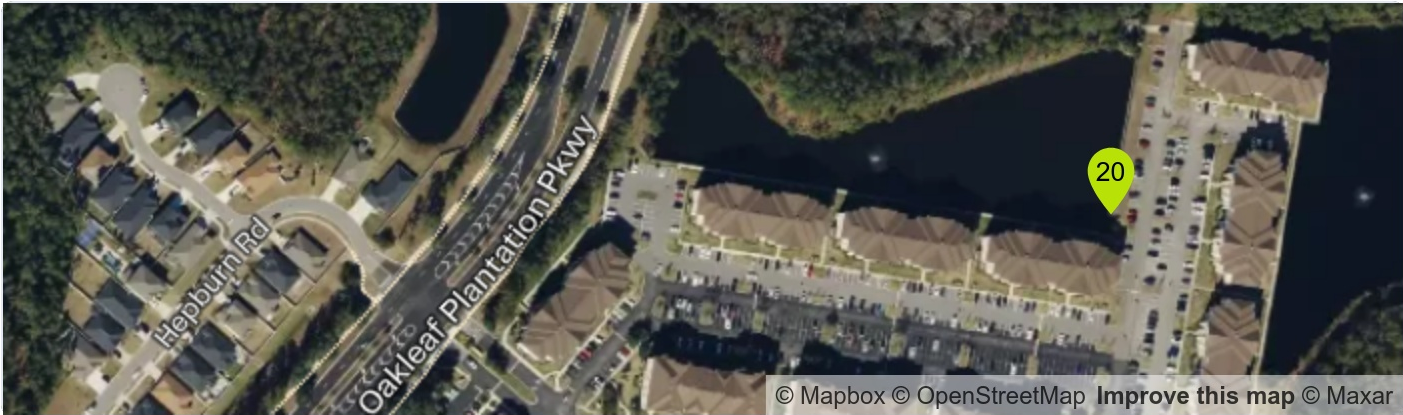
Location:

Created by:



Branden J Marcinell

Jun 9, 2025 at 10:24 am EDT



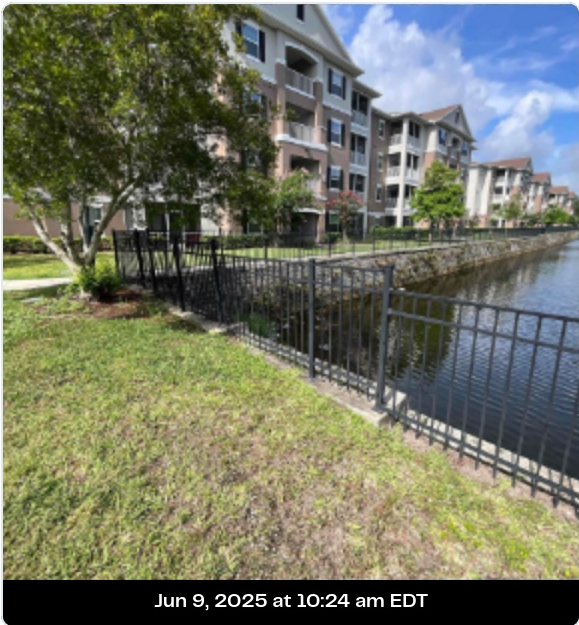
Notes:

Branden J Marcinell

June 9, 2025 10:24 AM EDT

Railing loose. Suggest repair to resecure.

Photos:



21

87

Needs Action


Pin Type: General

Categories:

Safety

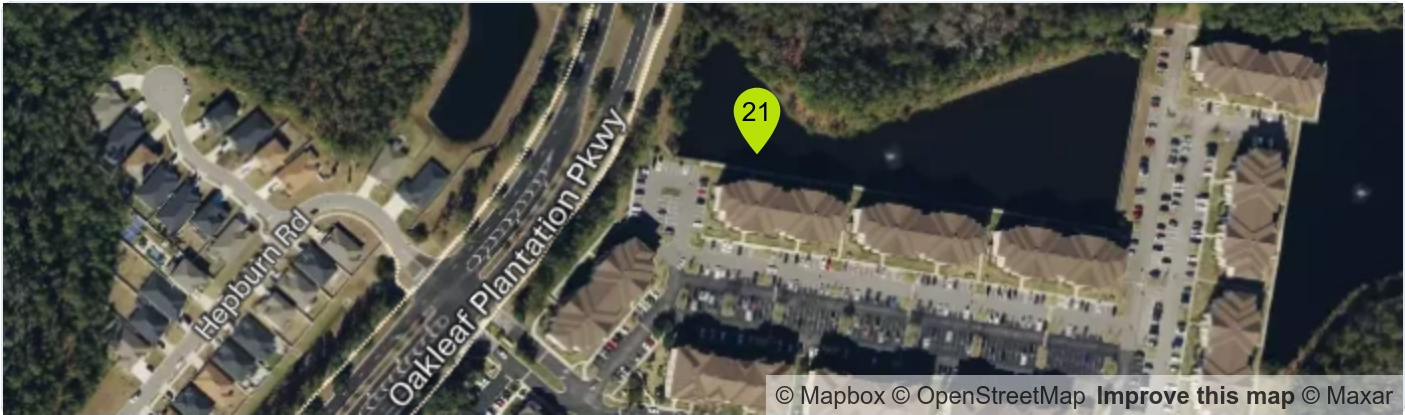
Location:

Created by:



Branden J Marcinell

Jun 9, 2025 at 10:35 am EDT



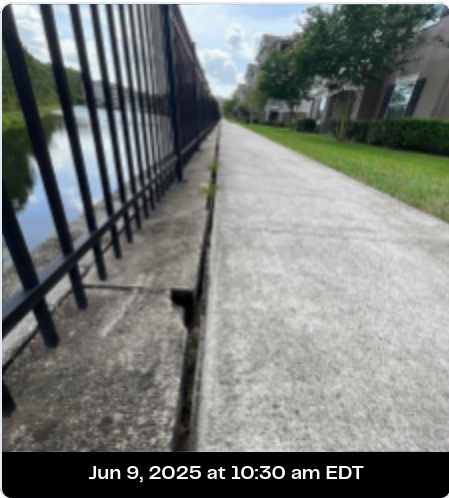
Notes:

Branden J Marcinell

June 9, 2025 10:35 AM EDT

Retaining wall separating from walkway. Advised inspection for safety.

Photos:



21

87

Needs Action *(continued)*

Created by:



Branden J Marcinell

Jun 9, 2025 at 10:35 am EDT

Pin Type: General

Photos:



Jun 9, 2025 at 10:29 am EDT


22 **88** Observation

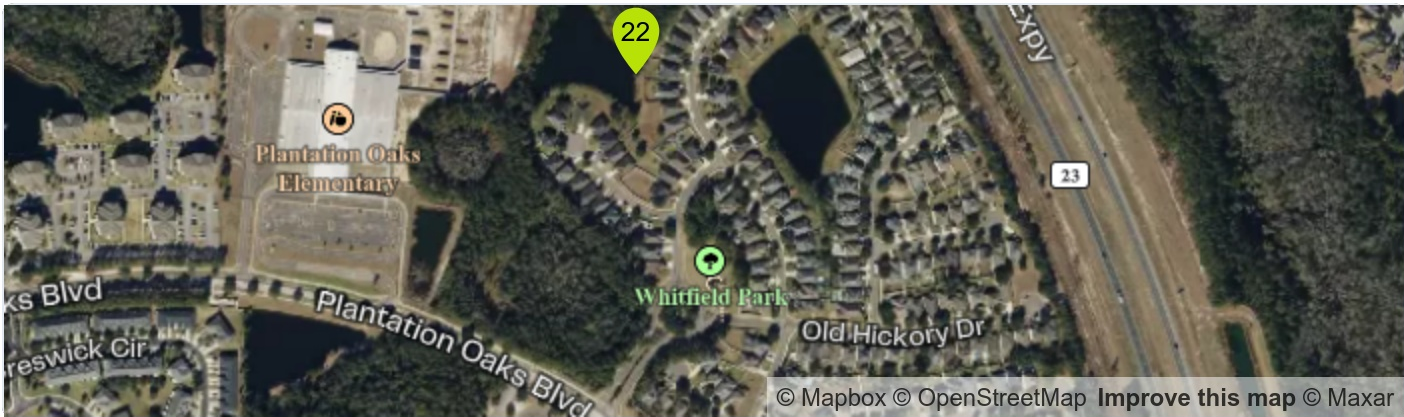
Pin Type: General

Categories:

Storm

Location:

Created by:
 Branden J Marcinell
Jun 9, 2025 at 11:01 am EDT



Notes:

Branden J Marcinell June 9, 2025 11:01 AM EDT
Control structure MES in pond cracking surface concrete. Observed at future inspections.

Photos:



23

89

Needs Action

Pin Type: General

Categories:

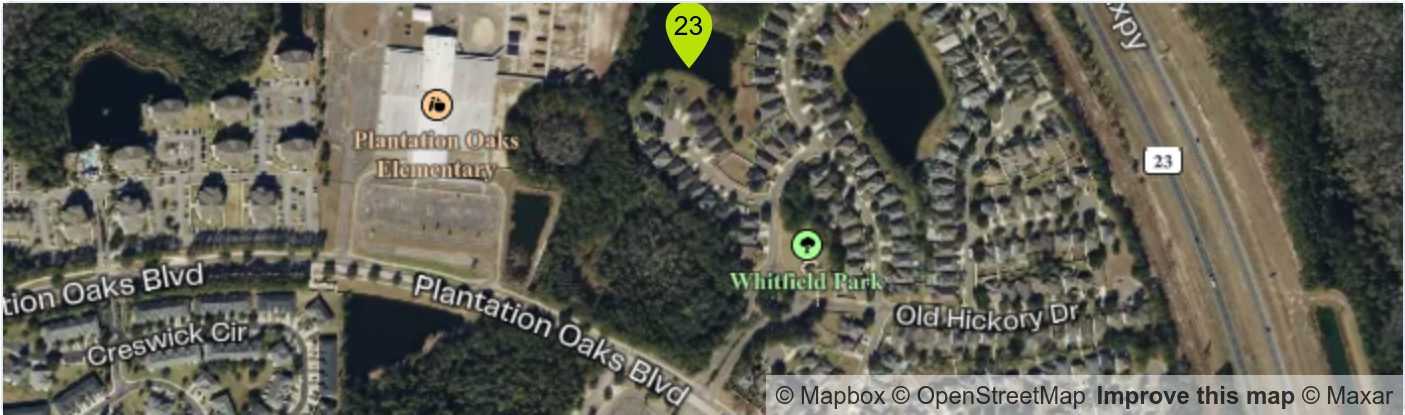
Storm

Location:

Created by:

Branden J Marcinell

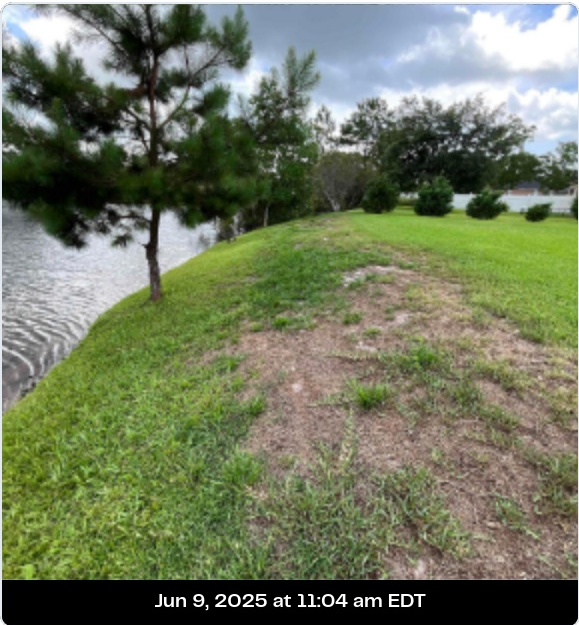
Jun 9, 2025 at 11:04 am EDT



Notes:

Branden J Marcinell June 9, 2025 11:04 AM EDT
Dead vegetation on Pond Bank. Reestablish vegetation to stabilize and protect against erosion.

Photos:




24 **90** **Needs Action**

Pin Type: General

Categories:

Safety

Location:

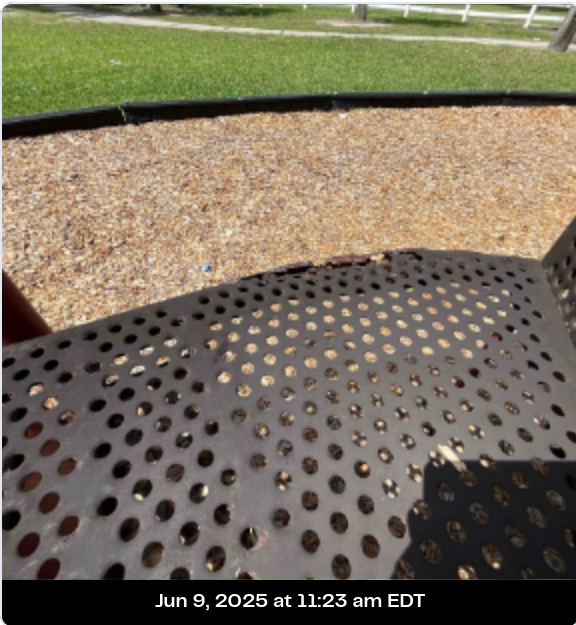
Created by:
 Branden J Marcinell
Jun 9, 2025 at 11:24 am EDT



Notes:

Branden J Marcinell June 9, 2025 11:24 AM EDT
Expose rusted metal on landing. Landing flexes under adult load. Protect against sharp edges.

Photos:



25

91

Needs Action


Pin Type: General

Categories:

Irrigation

Location:

Created by:



Branden J Marcinell

Jun 9, 2025 at 11:25 am EDT



Notes:

Branden J Marcinell June 9, 2025 11:25 AM EDT
Possible issue with irrigation. Investigate as needed.

Photos:



26

92

Needs Action


Pin Type: General

Categories:

Storm

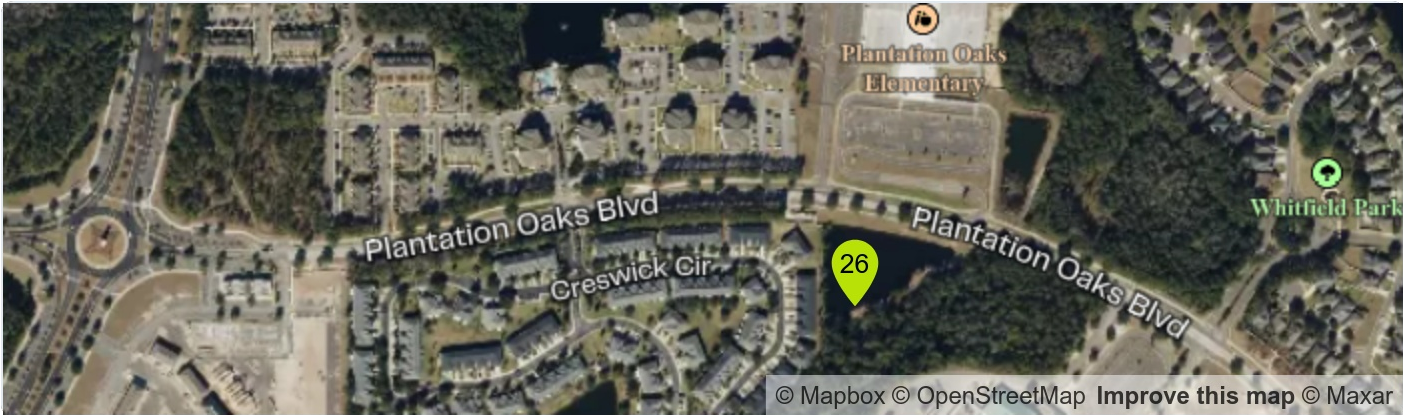
Location:

Created by:



Branden J Marcinell

Jun 9, 2025 at 12:03 pm EDT



Notes:

Branden J Marcinell June 9, 2025 12:03 PM EDT

Weir blocked by vegetation and not functioning correctly. Remove vegetation and clean weir grate as needed.

Photos:



27

93

Needs Action

Pin Type: General

Categories:

Storm

Location:

Created by:

Branden J Marcinell

Jun 9, 2025 at 12:10 pm EDT



Notes:

Branden J Marcinell June 9, 2025 12:10 PM EDT
Dead vegetation on Pond Bank. Reestablish vegetation to stabilize and protect against erosion.

Photos:



Jun 9, 2025 at 12:05 pm EDT



Jun 9, 2025 at 12:05 pm EDT



Jun 9, 2025 at 12:04 pm EDT

27

93

Needs Action*(continued)*

Created by:



Branden J Marcinell

Jun 9, 2025 at 12:10 pm EDT

Pin Type: General

Photos:



Jun 9, 2025 at 12:04 pm EDT

28

94

Needs Action


Pin Type: General

Categories:

Safety

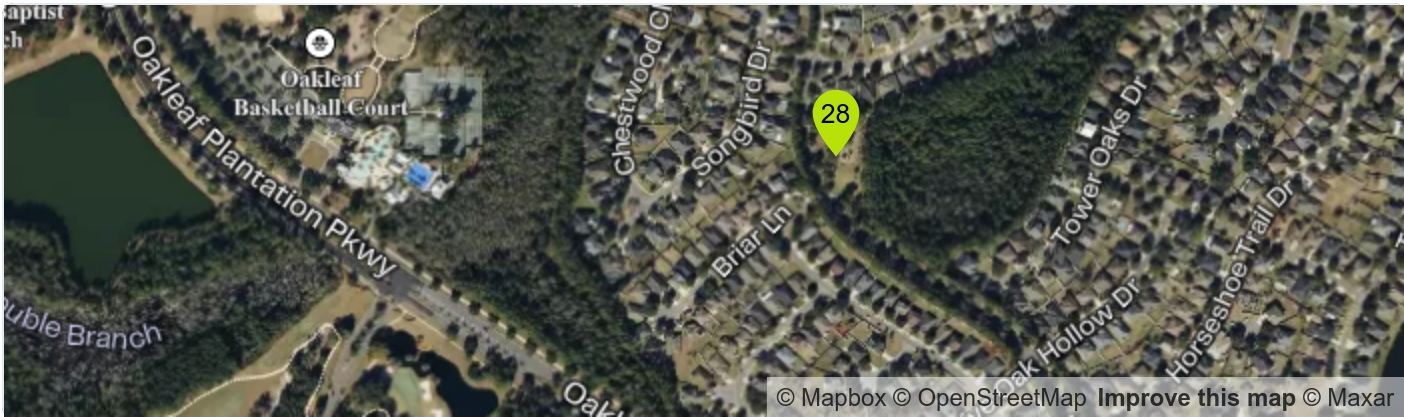
Location:

Created by:



Branden J Marcinell

Jun 9, 2025 at 2:08 pm EDT



Notes:

Branden J Marcinell

June 9, 2025 2:08 PM EDT

Broken concrete creating a trip hazard. Replaced sidewalk segment to repair damaged area flush to existing concrete.

Photos:



29

95

Needs Action


Pin Type: General

Categories:

Safety

Location:

Created by:



Branden J Marcinell

Jun 9, 2025 at 2:09 pm EDT



Notes:

Branden J Marcinell June 9, 2025 2:09 PM EDT
Support post for pavilion area rotting out at the base. Advised inspection by structural engineer.

Photos:



30

96

Needs Action

Pin Type: General

Categories:

Safety

Location:

Created by:

Branden J Marcinell

Jun 9, 2025 at 2:15 pm EDT



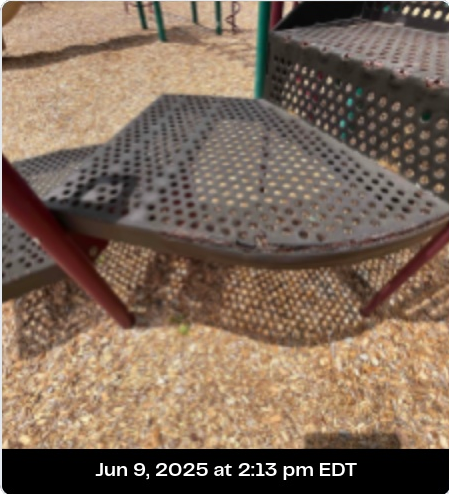
Notes:

Branden J Marcinell

June 9, 2025 2:15 PM EDT

Exposed rusted metal on landing. Landing flexes under adult load. Multiple areas showing exposed rust and sharp edges. Advise protection against sharp edges.

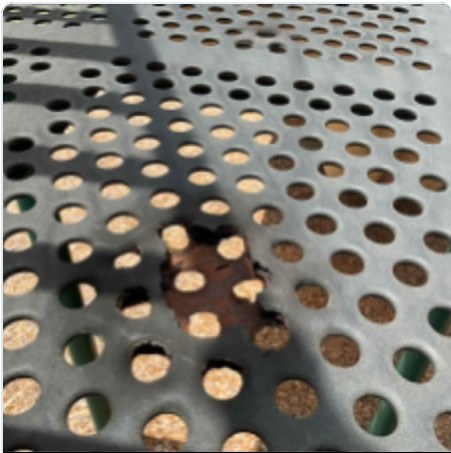
Photos:





Pin Type: General

Photos:



Jun 9, 2025 at 2:12 pm EDT



Jun 9, 2025 at 2:12 pm EDT



Jun 9, 2025 at 2:12 pm EDT

31

97

Needs Action


Pin Type: General

Categories:

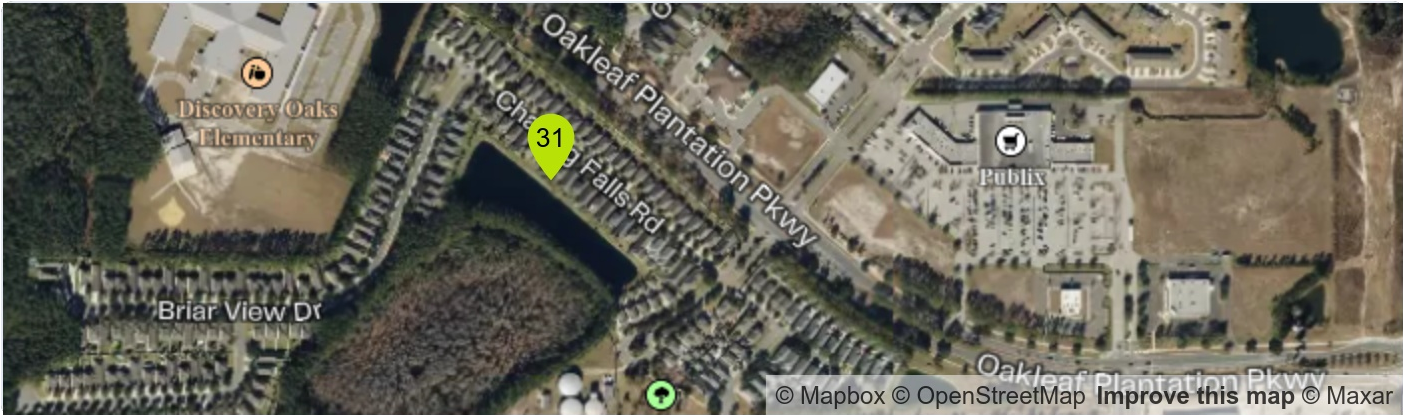
Erosion

Location:

Created by:

 Branden J Marcinell

Jun 10, 2025 at 10:16 am EDT

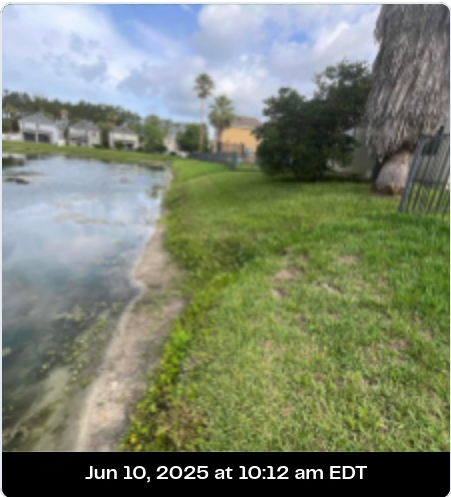


Notes:

Branden J Marcinell Jun 10, 2025 10:16 AM EDT

Large grade change at pond Bank. Multiple locations of erosion at property lines. Needs to be addressed due to the level of erosion observed.

Photos:





Pin Type: General

Jun 10, 2025 at 10:16 am EDT

Photos:



Jun 10, 2025 at 10:11 am EDT



Jun 10, 2025 at 10:10 am EDT

32

98

Needs Action


Pin Type: General

Categories:

Safety

Location:

Created by:



Branden J Marcinell

Jun 10, 2025 at 11:36 am EDT



Notes:

Branden J Marcinell

June 10, 2025 11:36 AM EDT

Abrupt grade change in sidewalk due to shaving. Advised painting, yellow, or softening grade change.

Photos:



33

99

Needs Action


Pin Type: General

Categories:

Hardscape

Location:

Created by:



Branden J Marcinell

Jun 10, 2025 at 11:40 am EDT



Notes:

Branden J Marcinell June 10, 2025 11:40 AM EDT
Landing pad flexes at right corner before stairs. Advise adding corner support to keep from flexing and potential premature ware of stair pads.

Photos:



34

100

Observation


Pin Type: General

Categories:

Hardscape

Location:

Created by:

 Branden J Marcinell

Jun 10, 2025 at 11:44 am EDT



Notes:

Branden J Marcinell June 10, 2025 11:44 AM EDT
Wooden support post in early stages of rot. Observe at future inspections for stability.

Photos:



35

101

Needs Action

Pin Type: General

Categories:

Irrigation

Location:

Created by:

Branden J Marcinell

Jun 10, 2025 at 11:48 am EDT



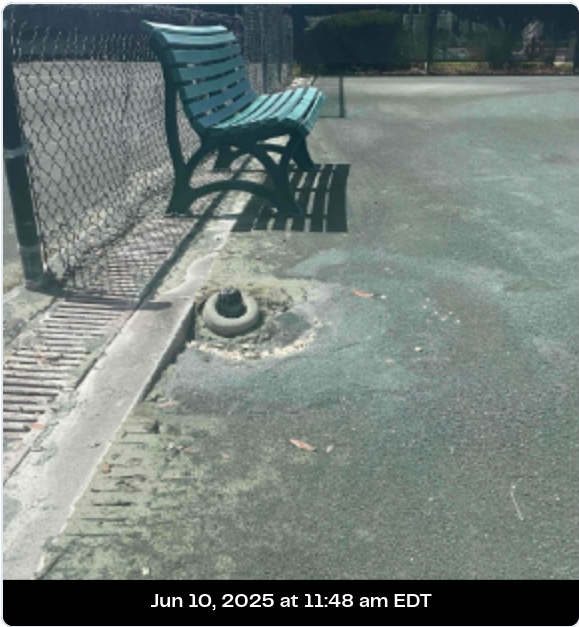
Notes:

Branden J Marcinell

June 10, 2025 11:48 AM EDT

Erosion around irrigation. Adjust head to correct.

Photos:




36 102 Observation

Pin Type: General

Categories:

Irrigation

Location:

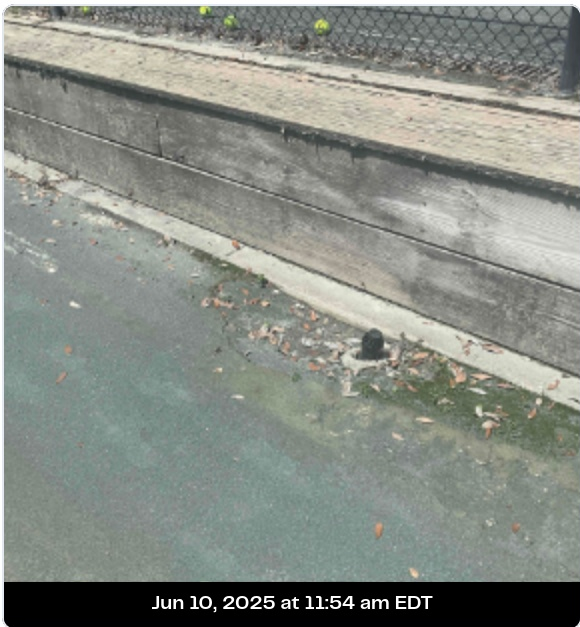
Created by:
 Branden J Marcinell
Jun 10, 2025 at 11:55 am EDT



Notes:

Branden J Marcinell June 10, 2025 11:55 AM EDT
Erosion around irrigation. Adjust head to correct.

Photos:



37

103

Needs Action


Pin Type: General

Categories:

Storm

Location:

Created by:

 Branden J Marcinell

Jun 10, 2025 at 11:57 am EDT



Notes:

Branden J Marcinell June 10, 2025 11:57 AM EDT
Trench drain along court's edge clogged. Advise cleaning to improve drainage.

Photos:



38

104


Needs Action

Pin Type: General

Categories:

Hardscape

Location:

Created by:
 Branden J Marcinell
Jun 10, 2025 at 12:02 pm EDT



Notes:

Branden J Marcinell June 10, 2025 12:02 PM EDT
Soft spot in clay surface. Repair / investigate cause.

Photos:



39

105

Observation


Pin Type: General

Categories:

Hardscape

Location:

Created by:

 Branden J Marcinell

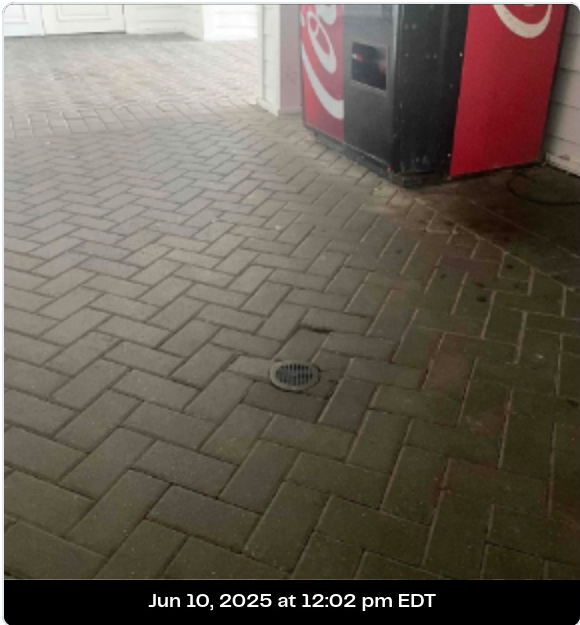
Jun 10, 2025 at 12:03 pm EDT



Notes:

Branden J Marcinell June 10, 2025 12:03 PM EDT
Brick pavers minor settling around grate. Monitor in future inspections.

Photos:



Jun 10, 2025 at 12:02 pm EDT

40

106

Needs Action

Pin Type: General

Categories:

Roadway

Location:

Created by:

Branden J Marcinell

Jun 10, 2025 at 12:50 pm EDT



Notes:

Branden J Marcinell

June 10, 2025 12:50 PM EDT

Pot hole next to inlet and parking lot. Possible issue with pipe underground. Patch hole with pavement or investigate cause for complete repair.

Photos:



Jun 10, 2025 at 12:49 pm EDT

41

107

Needs Action


Pin Type: General

Categories:

Erosion

Location:

Created by:

 Branden J Marcinell

Jun 10, 2025 at 12:53 pm EDT



Notes:

Branden J Marcinell June 10, 2025 12:53 PM EDT

Concrete pad being undermine suggest fill and stabilize around corner to protect against cracking and erosion.

Photos:



42

108

Needs Action


Pin Type: General

Categories:

Misc

Location:

Created by:

 Branden J Marcinell

Jun 10, 2025 at 12:57 pm EDT



Notes:

Branden J Marcinell June 10, 2025 12:57 PM EDT
Fence support down and broken. Repair and reattach for stability.

Photos:



43

109

Needs Action


Pin Type: General

Categories:

Safety

Location:

Created by:



Branden J Marcinell

Jun 10, 2025 at 12:57 pm EDT



Notes:

Branden J Marcinell

June 10, 2025 12:57 PM EDT

Broken sidewalk with trip hazard. Repair flush with existing sidewalk.

Photos:




44 **110** **Needs Action**

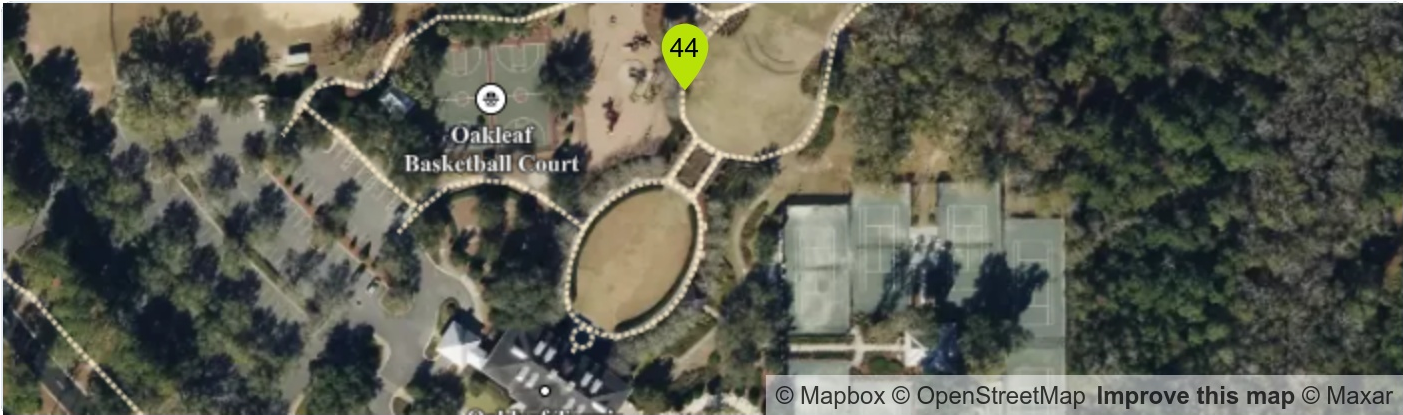
Pin Type: General

Categories:

Safety

Location:

Created by:
 Branden J Marcinell
Jun 10, 2025 at 12:59 pm EDT



Notes:

Branden J Marcinell June 10, 2025 12:59 PM EDT
Broken sidewalk with trip hazard. Repair flush with existing sidewalk.

Photos:



45

111

Needs Action


Pin Type: General

Categories:

Safety

Location:

Created by:



Branden J Marcinell

Jun 10, 2025 at 1:01 pm EDT



Notes:

Branden J Marcinell

June 10, 2025 1:01 PM EDT

Broken sidewalk with trip hazard. Repair flush with existing sidewalk.

Photos:



46

112

Needs Action


Pin Type: General

Categories:

Safety

Location:

Created by:

 Branden J Marcinell

Jun 10, 2025 at 1:03 pm EDT



Notes:

Branden J Marcinell June 10, 2025 1:03 PM EDT
Broken sidewalk with trip hazard. Repair flush with existing sidewalk.

Photos:



47

113

Observation


Pin Type: General

Categories:

Erosion

Location:

Created by:

 Branden J Marcinell

Jun 10, 2025 at 1:06 pm EDT



Notes:

Branden J Marcinell June 10, 2025 1:06 PM EDT
Erosion underneath sidewalk. Backfill to protect against settling and separation or monitor for worsening condition.

Photos:

